

**B** low **D** ispersion



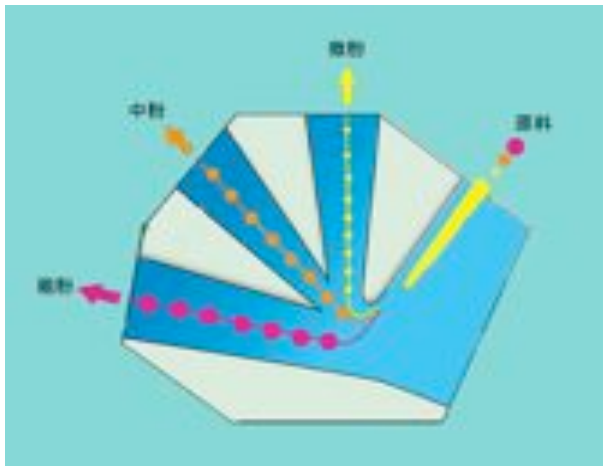
## COANDA 射流分级机



---

洛阳博丹机电科技有限责任公司

# 分级原理



## 特点

- 构造简单
- 一次分级 3 个产品（粗、中、细）
- 低运行成本（无转动部件和驱动电机）
- 大型化后分级精度不变
- 在彻底去除大颗粒方面性能卓越

## 不同型号对应不同用途

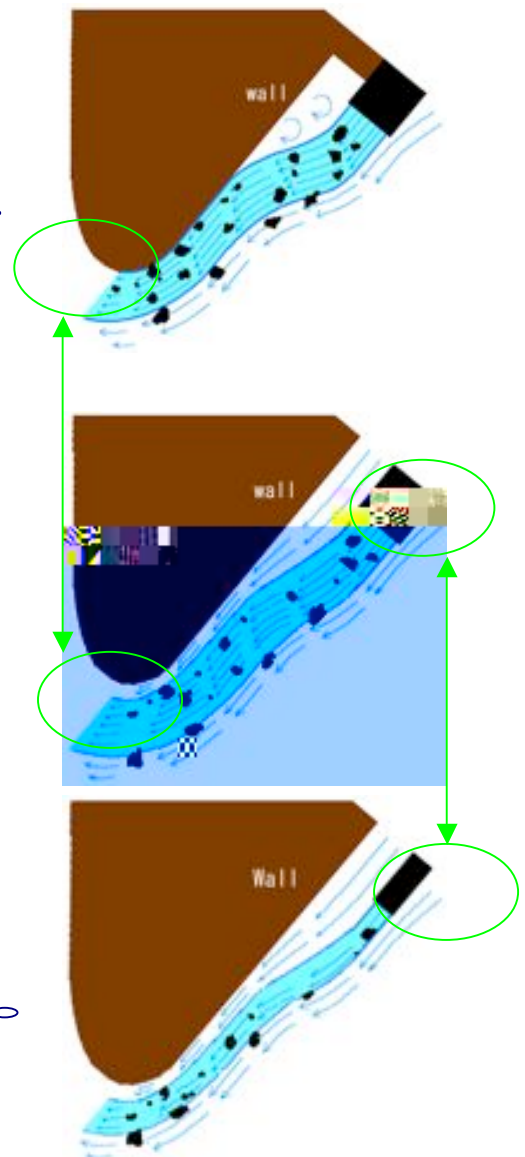
- 标准型



- 抗磨损型（专利）

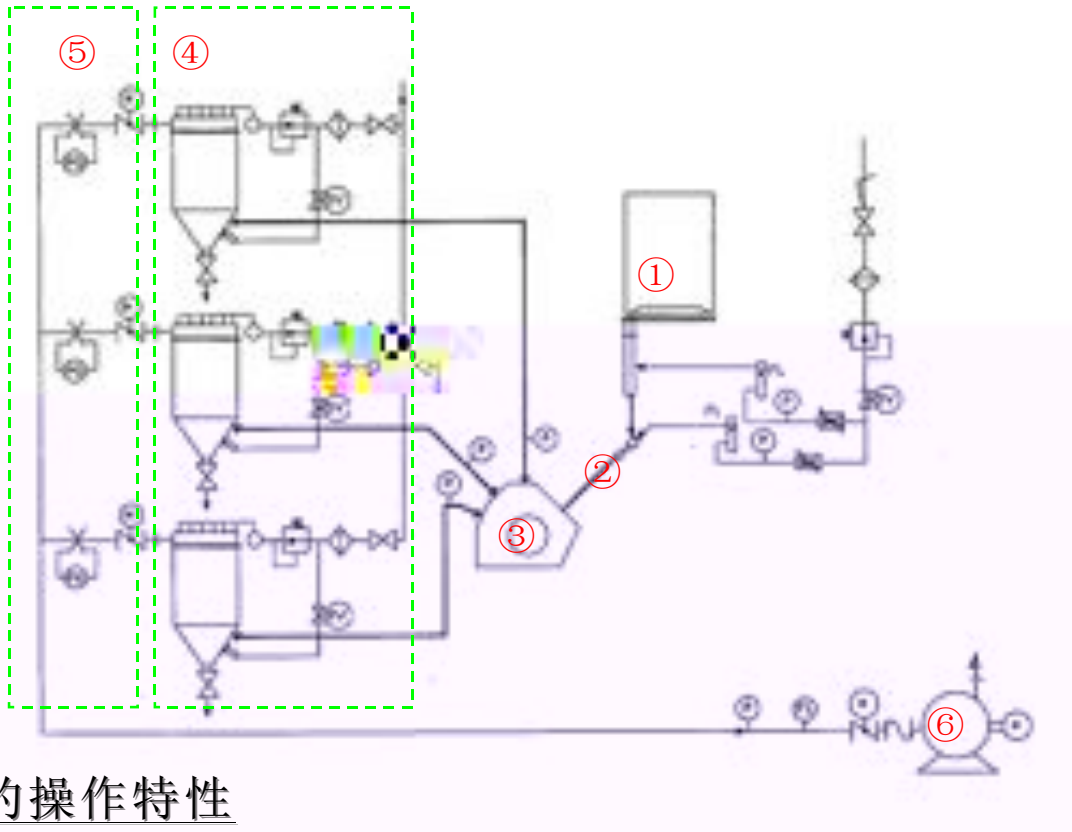


- 高精度型

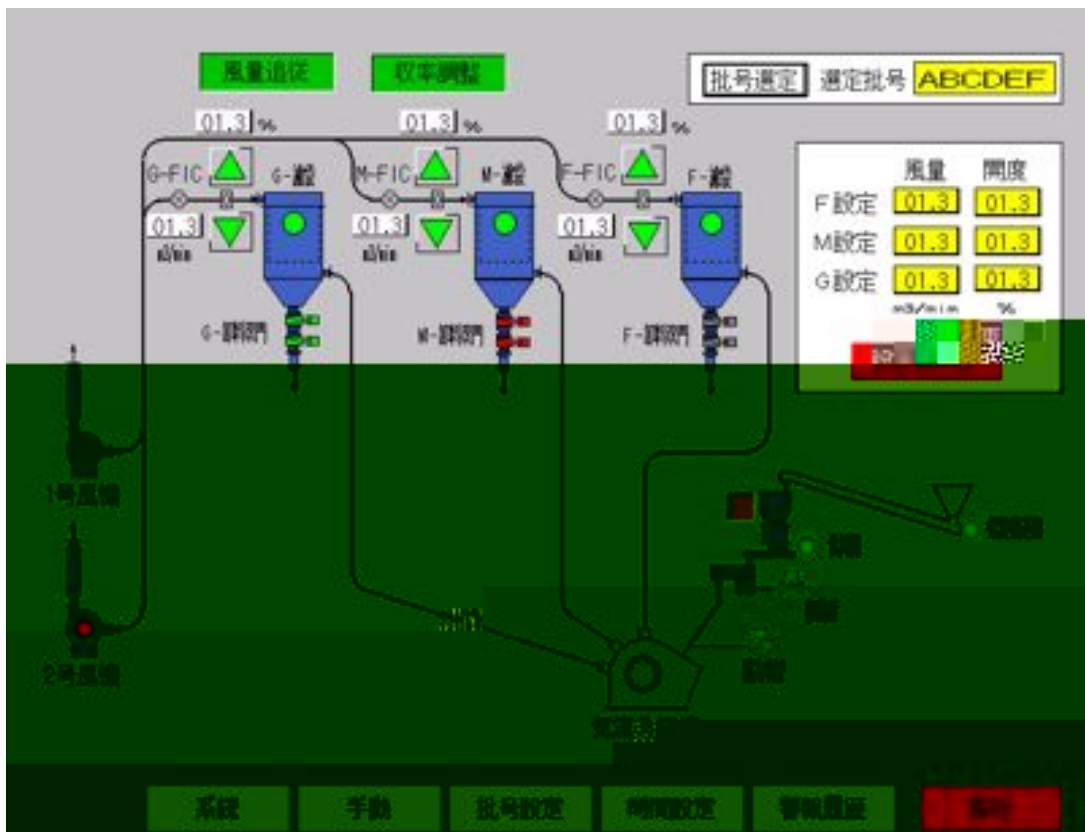


# 分级系统

从 ① 3个 ④ ⑤ 保 ②, ③ 入 3 产



## 简易的操作特性

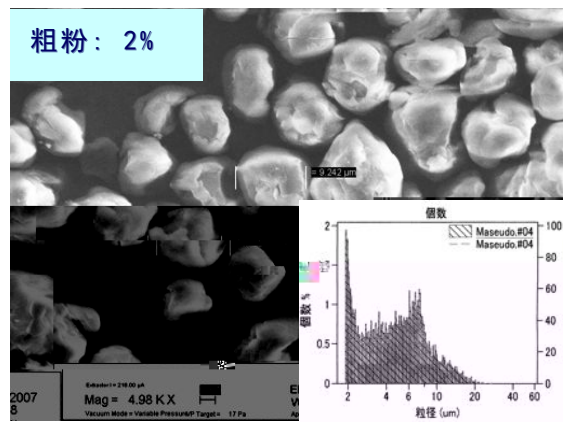
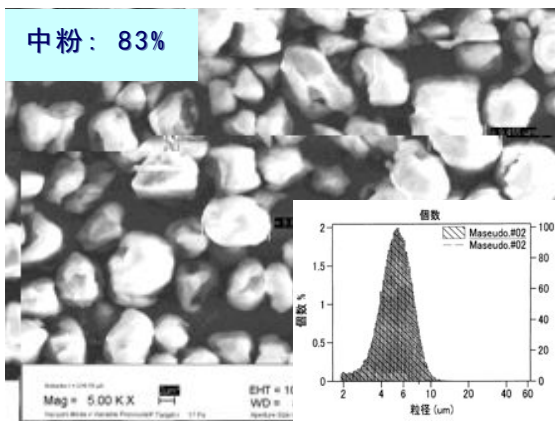
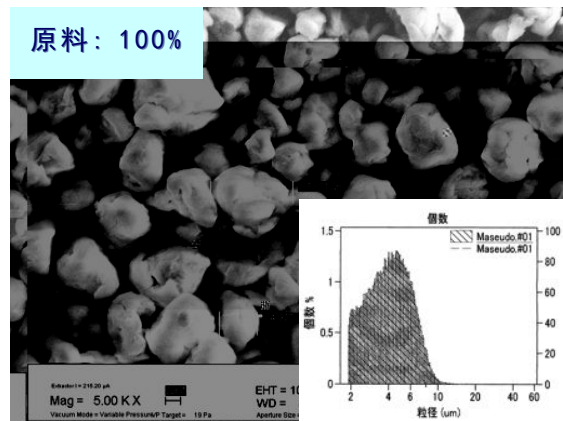
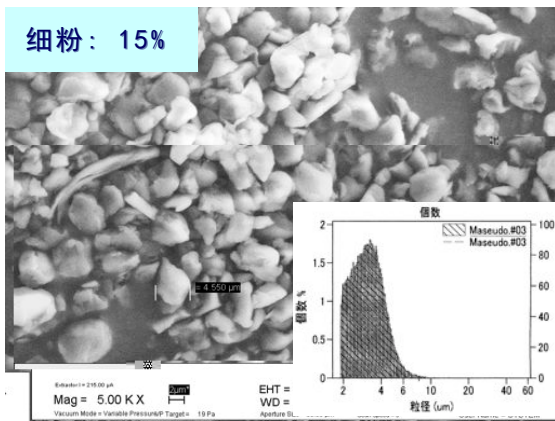


# 用途

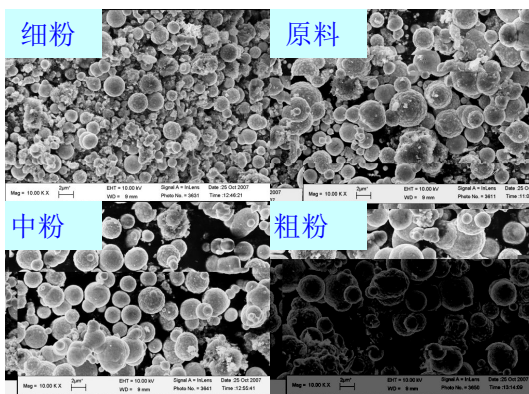
打印机复印机用墨粉；稀土抛光粉 CeO<sub>2</sub>；金属粉；氧化硅；树脂；粉末涂料；颜料；Al<sub>2</sub>O<sub>3</sub>, SiO<sub>2</sub>, ZrO<sub>2</sub>, SiC, TiO<sub>2</sub>, CuO, Al(OH)<sub>3</sub>; Fe<sub>2</sub>O<sub>3</sub>；磁性材料；高岭土；滑石粉；飞灰；塑料填充料；陶瓷粉末；化妆品等其他新材料

# 分级例

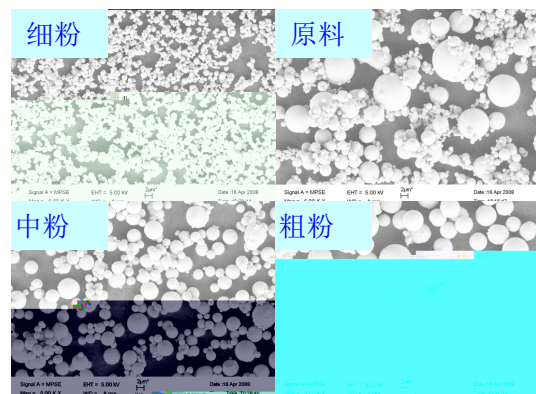
## 彩色墨粉



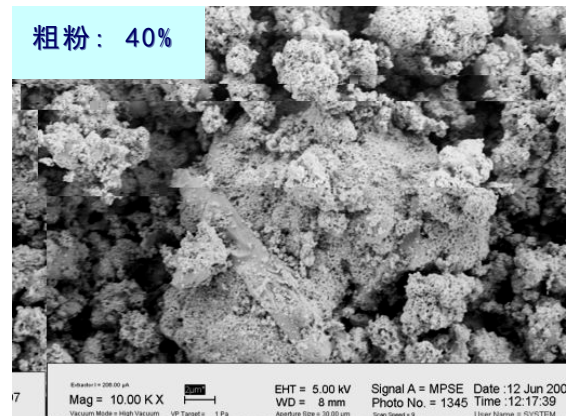
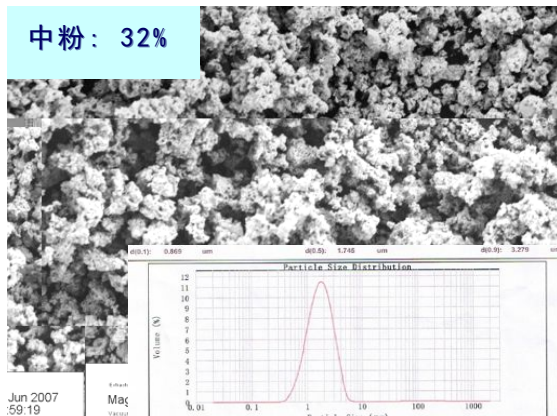
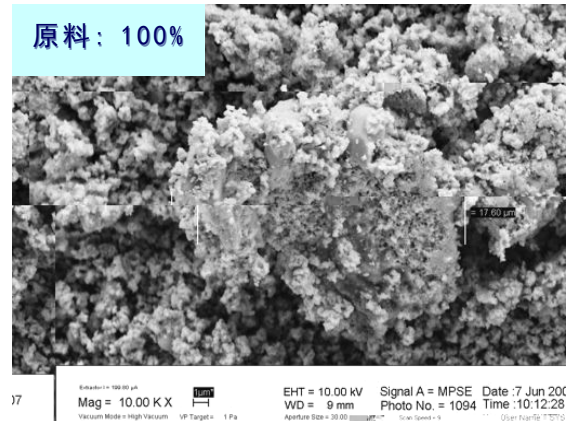
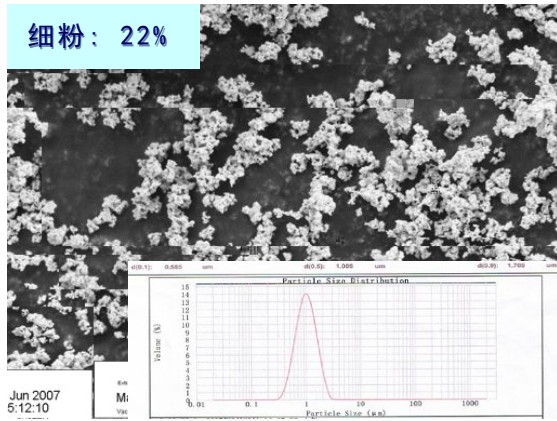
## 铁



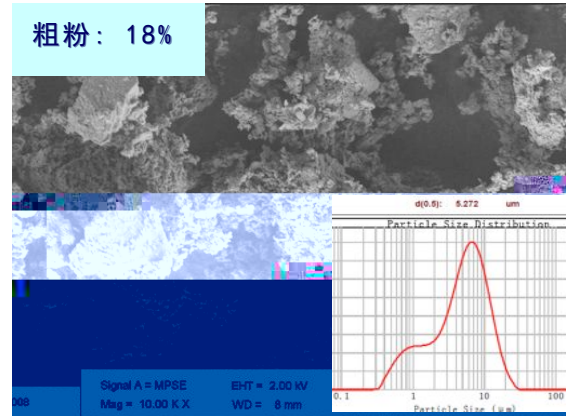
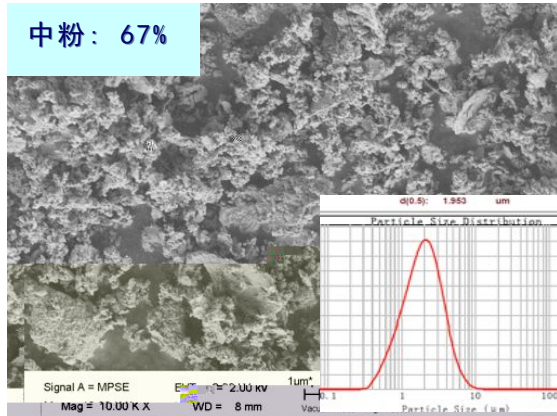
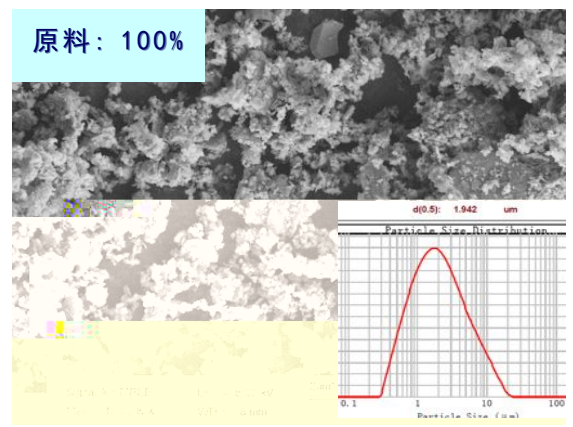
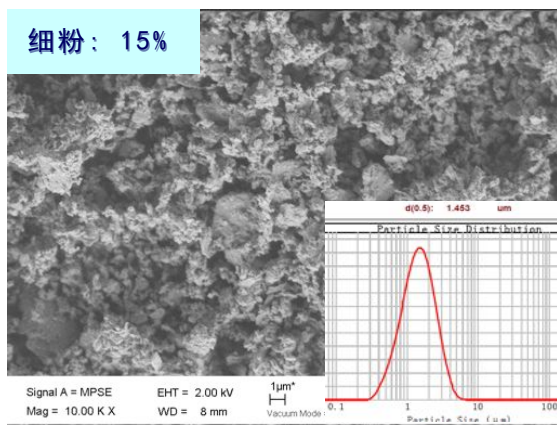
## 锌



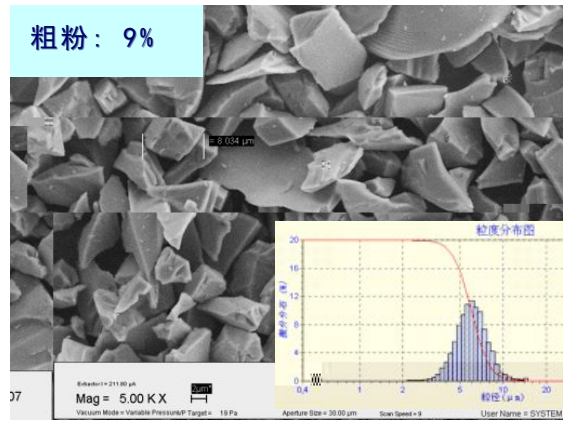
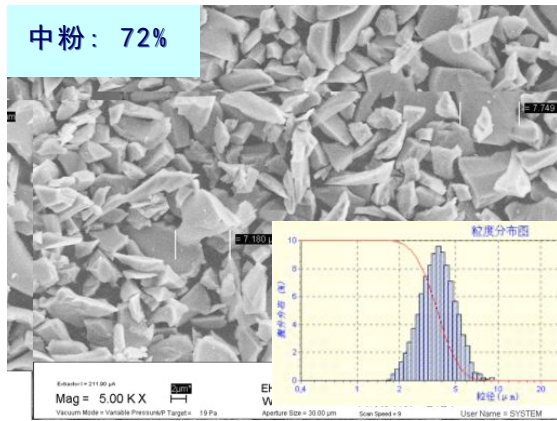
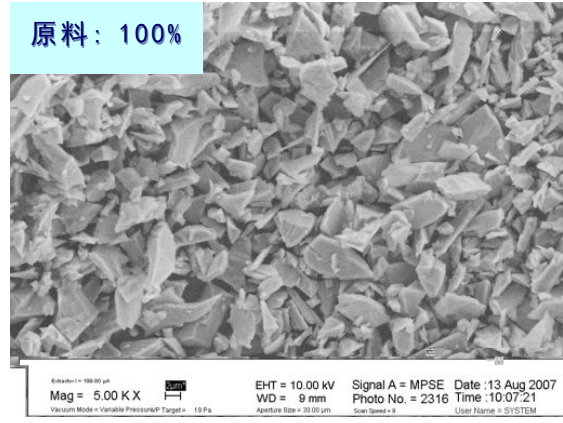
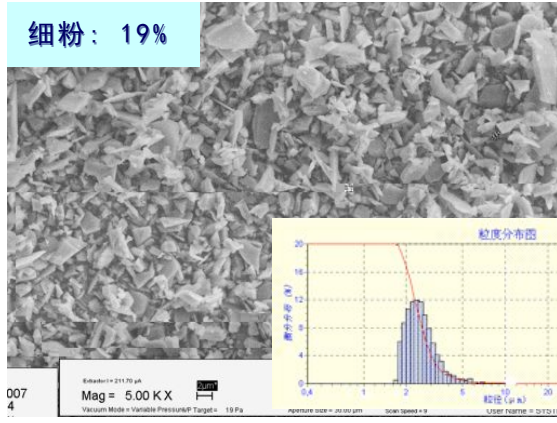
# 氧化铈



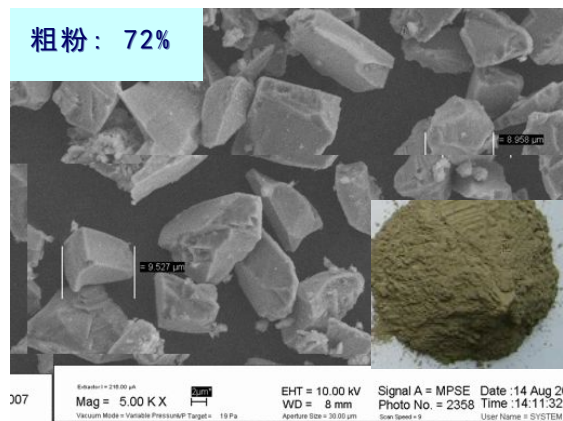
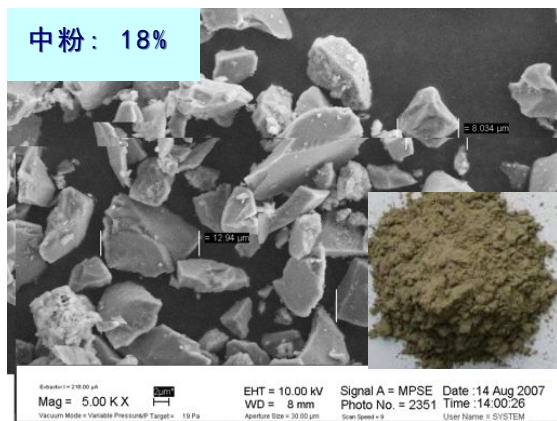
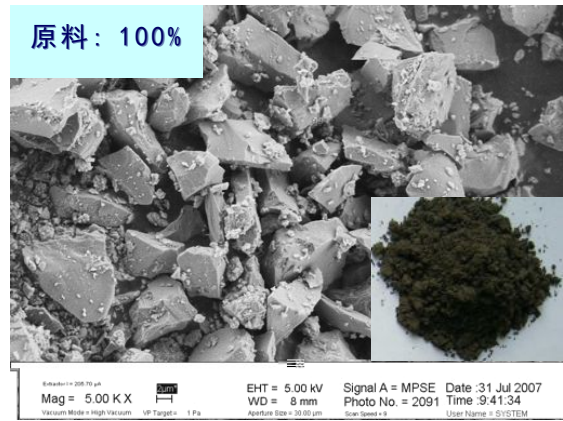
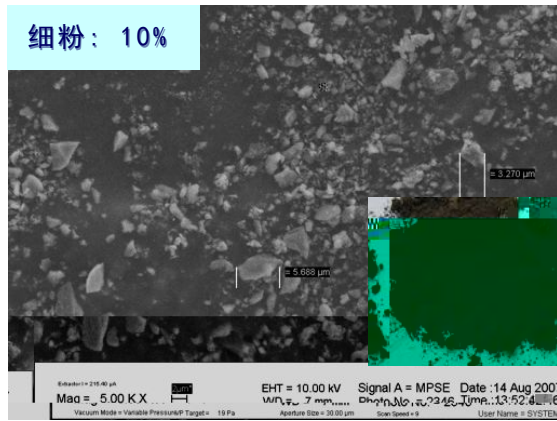
# 高土



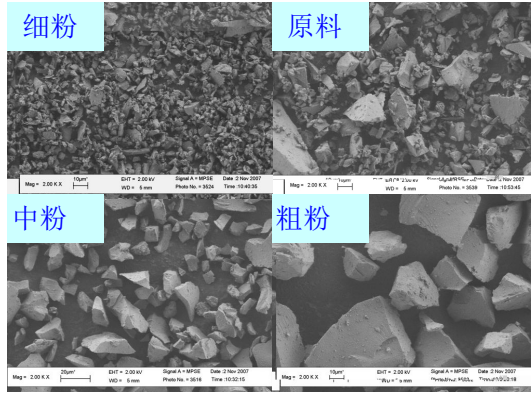
碳化硅



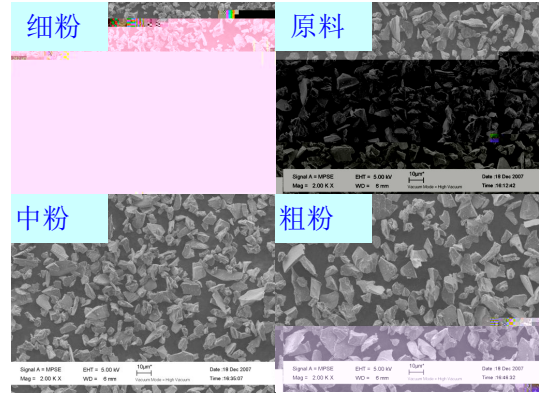
SiC +



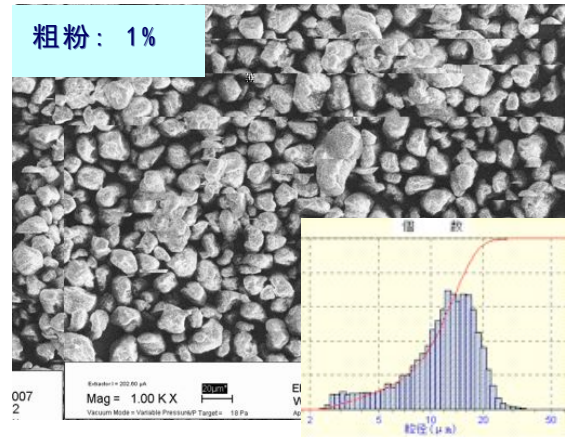
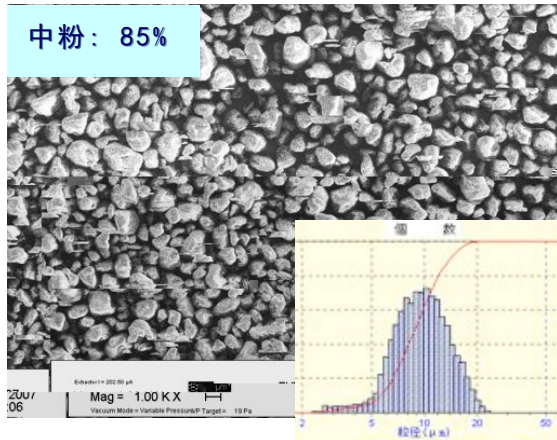
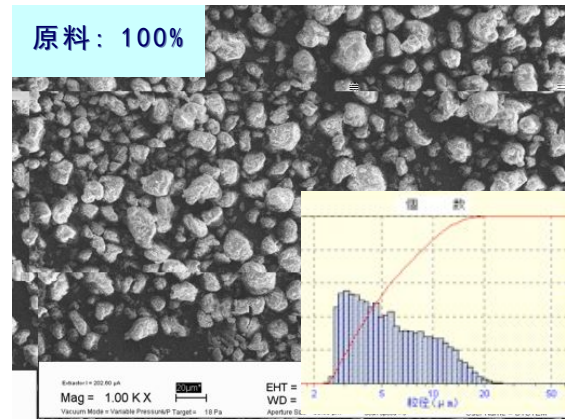
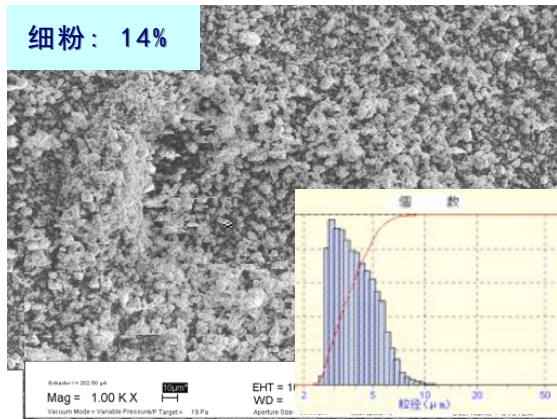
## 石英粉



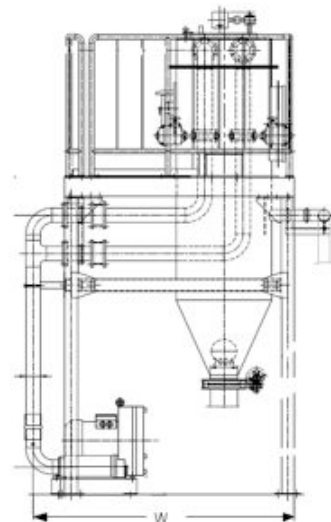
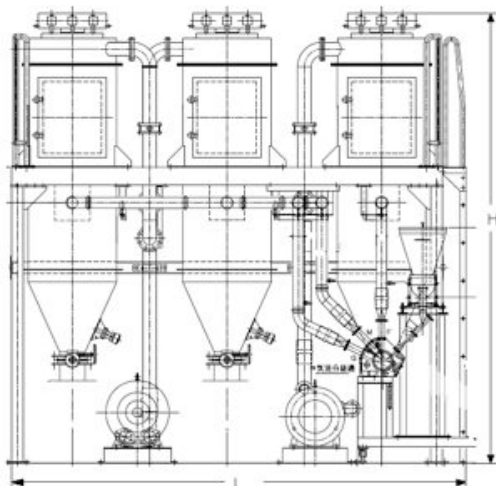
## 刚玉粉



## 黑色墨粉



## 设备外形尺寸



型号	处理能力 (kg/h)	气流流量 (m <sup>3</sup> /min)	压缩机动 力 (kW)	压缩空气量 (Nm <sup>3</sup> /min)	系统外形 L×W×H(mm)
SF-10	20~130	4~8	4~11	0.2~0.5	3000×3000×3500
SF-20	40~260	6~12	6~17	0.3~0.8	3500×3500×4000
SF-30	60~390	8~16	8~22	0.4~1.1	4000×4000×4500
SF-60	120~780	14~28	14~39	0.8~2.2	4500×4500×4800
SF-90	180~5200	20~40	20~55	1.2~3.3 C	5000×5000×5100